



CSC

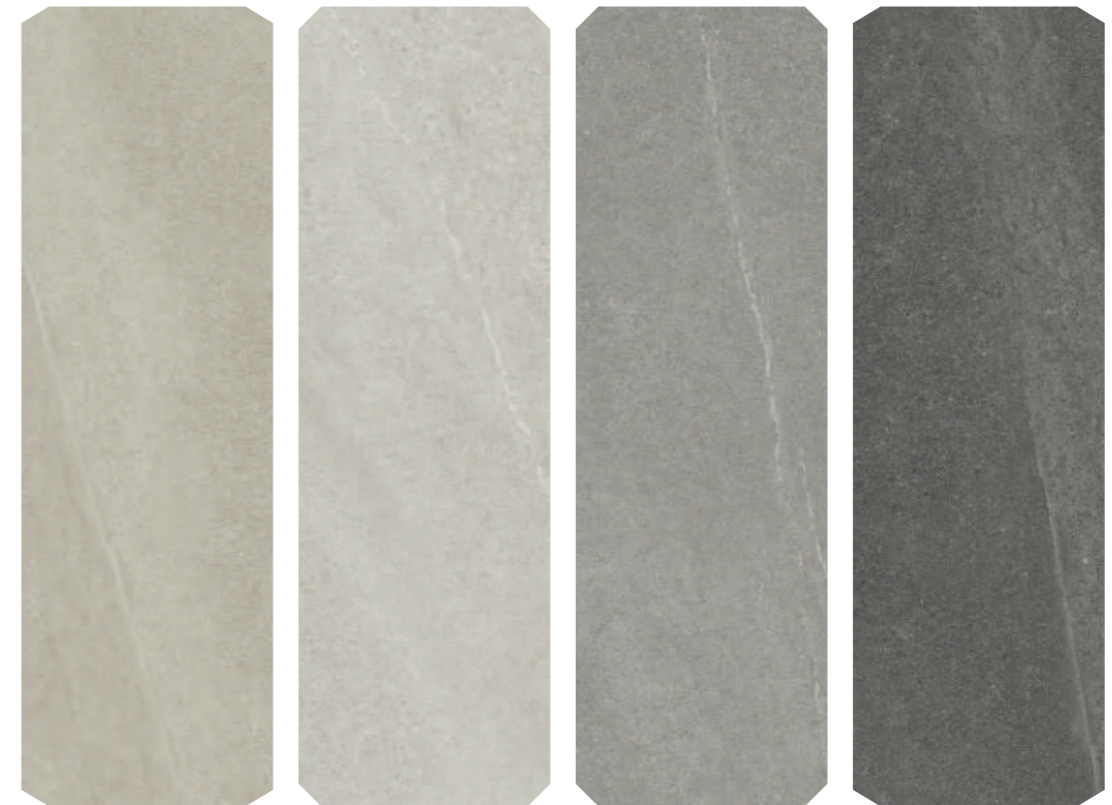
NATURSTEIN & KERAMIK

limestone



limestone

Farben



SAND

WHITE

SILVER

ANTRACITE

Grösse

| LIMESTONE | | | | | |
|------------------|---------------|---------------|------------------------|-----------------------|------------------|
| V2 | R10 REKT | R10 REKT | R10 REKT | R10 REKT | R10 REKT |
| Stärke | 9.5mm | 9.5mm | 9.5mm | 9.5mm | 9.5mm |
| Limestone | 7.5x29 | 30x60 | 60x60 | 60x120 | 120x120 |
| Sand | ✓ | ✓ | ✓ | ✓ | ✓ |
| White | ✓ | ✓ | ✓ | ✓ | ✓ |
| Silver | ✓ | ✓ | ✓ | ✓ | ✓ |
| Antracite | ✓ | ✓ | ✓ | ✓ | ✓ |
| V2 | R11 REKT | R11 REKT | | | |
| Stärke | 20mm | 20mm | | | |
| Limestone | 60x60 | 60x120 | | | |
| Sand | ✓ | ✓ | | | |
| White | ✓ | ✓ | | | |
| Silver | ✓ | ✓ | | | |
| Antracite | ✓ | ✓ | | | |
| | Poliert | Poliert | Spezial V2 / R10 REKT | Spezial V2 / R10 REKT | Brick Combo |
| V2 / R10 REKT | Esagonetta | Mosaik 5x5 | Tropical Dark Comp A+B | Tropical Light | Limestone Silver |
| Limestone Mosaik | 30.5x26.3 | 30x30 | 60x120 | 60x120 | 7.5x29 |
| Preis | ✓ | ✓ | ✓ | ✓ | ✓ |
| | Brick Combo | Brick Combo | | | |
| V2 / R10 REKT | Cottage Smoke | Cottage Brown | | | |
| Limestone Mosaik | 7.5x29 | 7.5x29 | | | |
| Preis | ✓ | ✓ | | | |

Esszimmer

Boden: LIMESTONE SAND 60x120



WAND: LIMESTONE SAND 60x120
BODEN: LIMESTONE WHITE 120x120



Garten



LIMESTONE SAND
60x120x 20mmR11





Wohnzimmer

WAND : LIMESTONE SAND 60x120+ MARMI CALACATTA GOLD 60x120+ LUX TAUPE 60x120
BODEN: LIMESTONE WHITE 120x120



Badzimmer

WAND: LIMESTONE WHITE 60x120 LIMESTONE TROPICAL LIGHT 60x120
BODEN: LIMESTONE WHITE 60x120



Garten

—
LIMESTONE SAND
60x120x20 mmR11



WAND: LIMESTONE SILVER 60x120
BODEN: LIMESTONE ANTRACITE 60x120



café

BODEN : LIMESTONE SILVER 120x120





ROOFTOP

bar



LIMESTONE SILVER
60x120x20mmR11



Wohnzimmer

WAND: LIMESTONE SILVER 60x120 MARM PIETRA GRAPHITE 60x120
BODEN: LIMESTONE ANTRACITE 120x120



WAND: LIMESTONE SILVER 120x120
BODEN: LIMESTONE ANTRACITE 120x120



Garten

LIMESTONE SILVER
60x120 20mmR11



LOUNGE
bar

WAND: LIMESTONE TROPICAL DARK 60x120
BODEN: LIMESTONE ANTRACITE 60x120

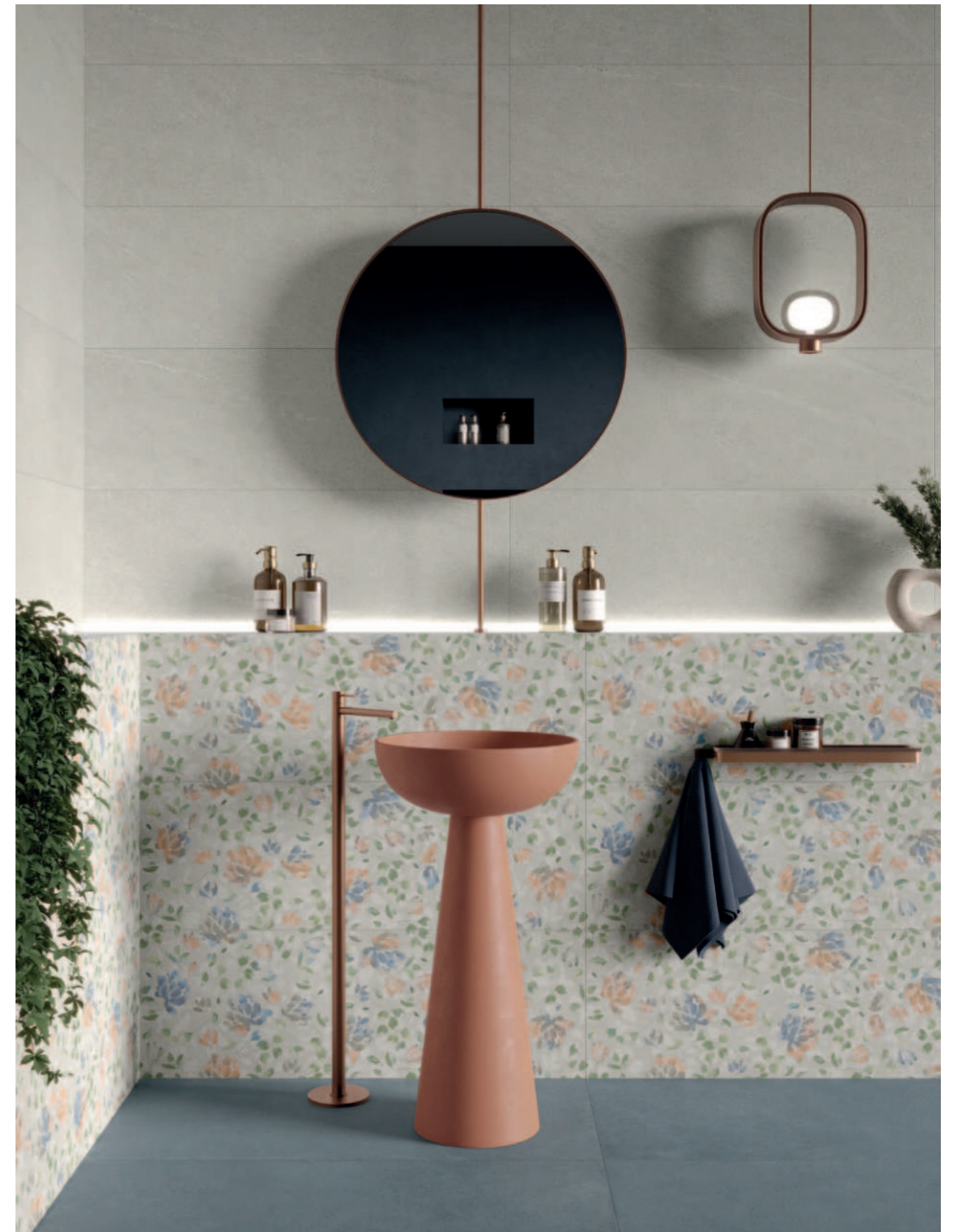


Schlaffzimmer

WAND LIMESTONE ANTRACITE 60x120
BODEN: LIMESTONE ANTRACITE 120x120



WAND: LIMESTONE WHITE 40x120 LIMESTONE SPRING WHITE 40x120
BODEN: OVERTONE OCEAN 60x120



Badzimmer

WAND: LIMESTONE WHITE 40x120 LIMESTONE MOON 40x120
BODEN: LIMESTONE WHITE 60x120



Badzimmer

WAND: LIMESTONE SAND 40x120 LIMESTONE MURETTO SAND 40x120
BODEN: LIMESTONE SAND 120x120





Badzimmer

WAND: LIMESTONE SILVER 40x120 LIMESTONE WHITE WAVE 40x120
BODEN: LIMESTONE SILVER 120x120





LIMESTONE
WHITE

FEINSTEINZEUG .REKTIFIZIERT

120x120 cm 60x120 cm 60x60 cm 30x60 cm 7,5x30 cm

± 9,5 mm

V2



120x120 Limestone White Rektifiziert

2



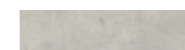
60x120 Limestone White Rektifiziert

2



60x60 Limestone White Rektifiziert

3



7,5x30 Limestone White Rektifiziert

44



30x60 Limestone White Rektifiziert

6



30,5x26,3 Limestone White Esagona

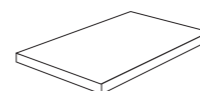
6



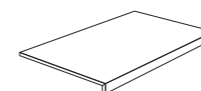
30x30 Limestone White Mosaico 5x5

11

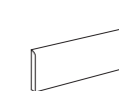
Sonderstücke



30x60 Stufe Verleimte Ecke *



30x60 Stufe Vorderseite Verklebt *



7x60 Sockelleisten

10



6x120 Sockelleisten

6



LIMESTONE
SILVER

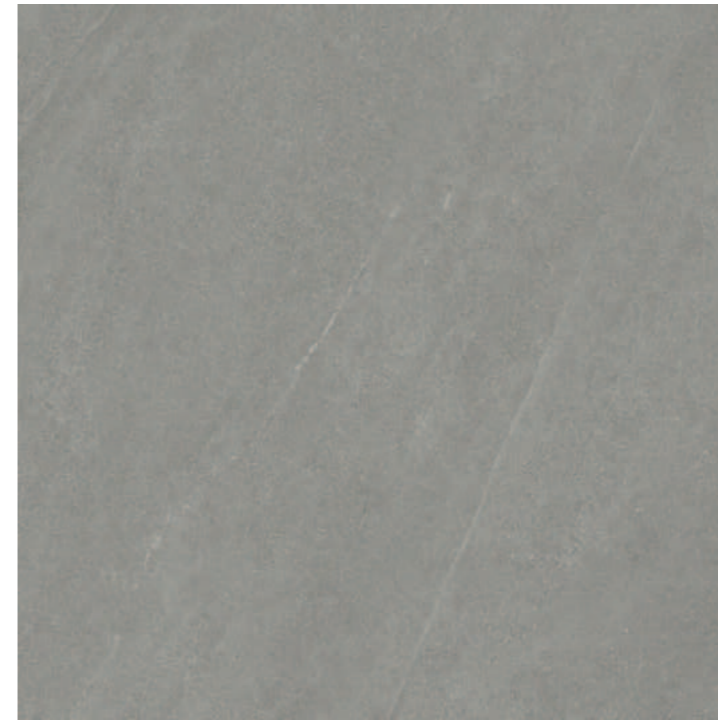
FEINSTEINZEUG .REKTIFIZIERT
RECTIFIED . PORCELAIN STONEWARE

120x120 cm 60x120 cm 60x60 cm 30x60 cm 7,5x30 cm \approx 9,5 mm

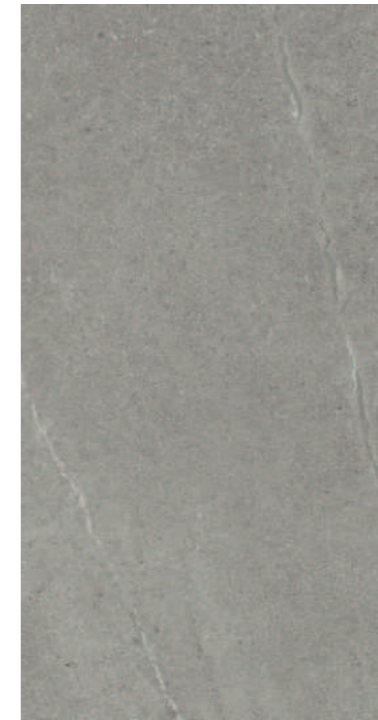
60x120 cm 60x60 cm \approx 20 mm



V2



120x120 Limestone Silver Rektifiziert



60x120 Limestone Silver Rektifiziert

2

2



60x60 Limestone Silver Rektifiziert

3



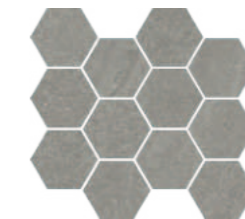
7,5x30 Limestone Silver Rektifiziert

44



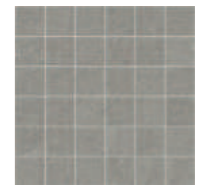
30x60 Limestone Silver Rektifiziert

6



30,5x26,3 Limestone Silver Esagona

6



30x30 Limestone Silver Mosaico 5x5

11

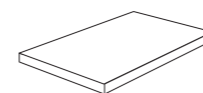
60x60 Limestone Silver Rektifiziert \approx 20 mm R11

2

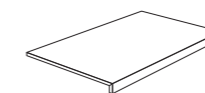
60x120 Limestone Silver Rektifiziert \approx 20 mm R11

1

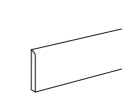
Sonderstücke



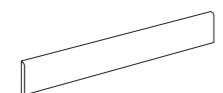
30x60 Stufe Verleimte Ecke *



30x60 Stufe Vorderseite Verklebt *



7x60 Sockelleisten



6x120 Sockelleisten

10

6



LIMESTONE SAND

FEINSTEINZEUG .REKTIFIZIERT
RECTIFIED . PORCELAIN STONEWARE

120x120 cm 60x120 cm 60x60 cm 30x60 cm 7,5x30 cm \approx 9,5 mm

60x120 cm 60x60 cm \approx 20 mm



V2



120x120 Limestone Sand Rektifiziert

2



60x120 Limestone Sand Rektifiziert

2



60x60 Limestone Sand Rektifiziert

3



7,5x30 Limestone Sand Rektifiziert

44



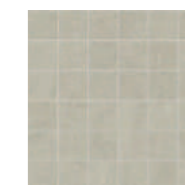
30x60 Limestone Sand Rektifiziert

6



30,5x26,3 Limestone Sand Esagona

6



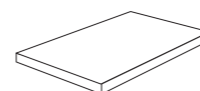
30x30 Limestone Sand Mosaico 5x5

11

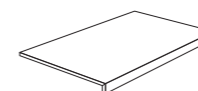
60x60 Limestone Sand Rektifiziert \approx 20 mm R11

2

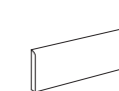
Sonderstücke



30x60 Stufe Verleimte Ecke *



30x60 Stufe Vorderseite Verklebt *



7x60 Sockelleisten

10



6x120 Sockelleisten

6



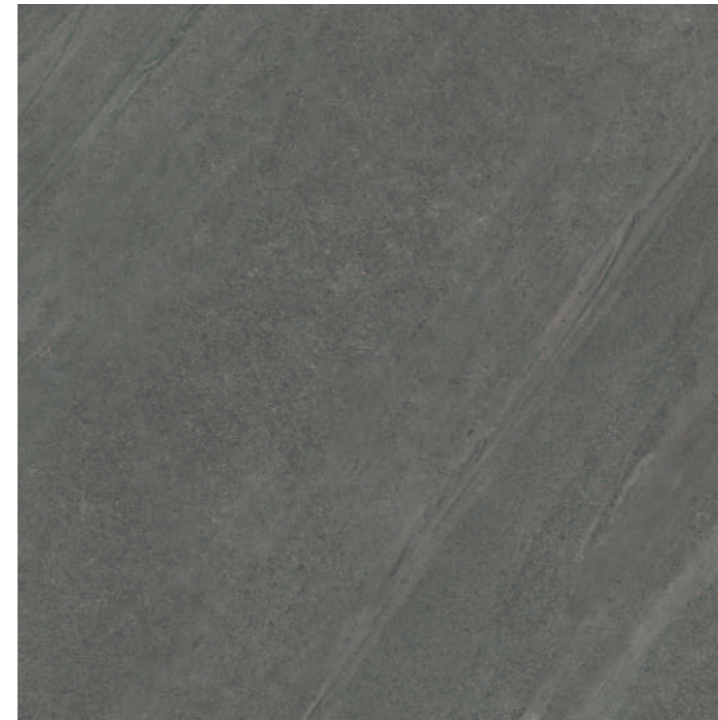
LIMESTONE
ANTRACITE

FEINSTEINZEUG .REKTIFIZIERT

120x120 cm 60x120 cm 60x60 cm 30x60 cm 7,5x30 cm

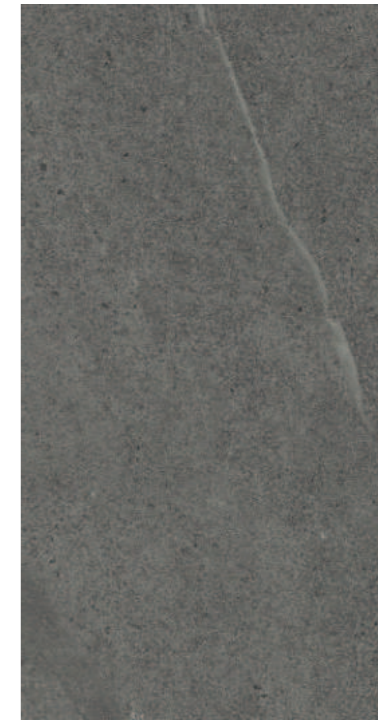
± 9,5 mm

V2



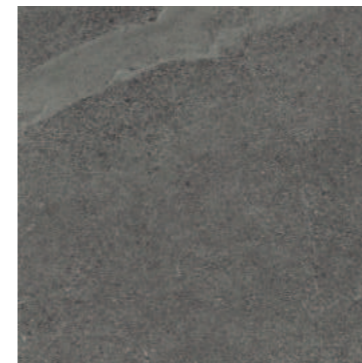
120x120 Limestone Antracite Rektifiziert

2



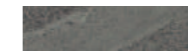
60x120 Limestone Antracite Rektifiziert

2



60x60 Limestone Antracite Rektifiziert

3



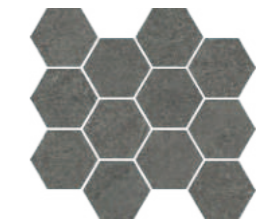
7,5x30 Limestone Antracite Rektifiziert

€ 58,50 m² ■ 44



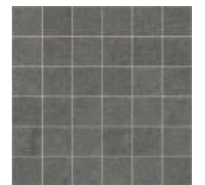
30x60 Limestone Antracite Rektifiziert

6



30,5x26,3 Limestone Antracite Esagona

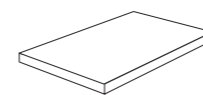
6



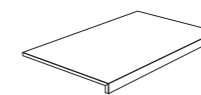
30x30 Limestone Antracite Mosaico 5x5

11

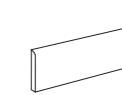
Sonderstücke



30x60 Stufe Verleimte Ecke *

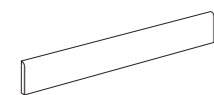


30x60 Stufe Vorderseite Verklebt *



7x60 Sockelleisten

10



6x120 Sockelleisten

6

TROPICAL DECORS 60x120 cm

± 9,5 mm



60x120 Limestone TropicalDark Rektifiziert

2



60x120 Limestone TropicalLight Rektifiziert

2

GRES PORCELLANATO . RETTIFICATO
RECTIFIED . PORCELAIN STONEWARE

NORMA DI RIFERIMENTO. SPECIFICATION REFERENCE - EN 14411 APPENDICE G BLA GL

| CARATTERISTICA TECNICA TECHNICAL FEATURE | NORMA NORM | VALORE RICHIESTO REQUIRED STANDARD | LIMESTONE |
|---|--------------------------------|--|---|
| WASSERABSORPTION in % | UNI EN ISO 10545-3 | ≤ 0,5% | KONFORM |
| BRUCHFESTIGKEIT | UNI EN ISO 10545-4 | ≥ 35 N/ mm ² | KONFORM |
| FROSTBESTÄNDIGKEIT | UNI EN ISO 10545-12 | KEINE SICHTBAREN VERÄNDERUNGEN | KONFORM |
| WIDERSTANDSFÄHIGKEIT GEGEN OBERFLÄCHENABRIEB (METODO PEI) | UNI EN ISO 10545-7 | ANZUGEBENDERWERT | DA 3 A 5 IN BASIS ALLE FARBEN |
| CHEMISCHE BESTÄNDIGKEIT | UNI EN ISO 10545-13 | KEINE SICHTBAREN VERÄNDERUNGEN | KONFORM |
| TEMPERATURWECHSELBESTÄNDIGKEIT | UNI EN ISO 10545-5 | KEINE SICHTBAREN VERÄNDERUNGEN | KONFORM |
| RUTSCHFESTIGKEIT | DIN 51130 DIN 51097 (A+B+C) | ABHÄNGIG VON DER UMGEBUNG ODER ARBEITSBEREICH | R10 (RETT.) A+B ±9,5 MM R11 (RETT.) A+B+C ±20 MM |
| DYNAMISCHER NASSREIBUNGSKOEFFIZIENT | Bot 3000 E | DCOF ≥ 0,42 | > 0,42 |

| LIMESTONE | mq/scatola | kg/scatola | colli/pallet | mq/pallet | kg/pallet |
|-----------------------------|---------------------------|----------------|--------------------------|-----------------------|-----------|
| 120x120 Rettificato * | 2,88 | 60,00 | 18 | 51,84 | 1080,00 |
| 60x120 Rettificato SP. 2 cm | 0,72 | 33,25 | 30 | 21,60 | 1013,50 |
| 60x60 Rettificato SP. 2 cm | 0,72 | 32,40 | 32 | 23,04 | 1036,80 |
| 60x120 Rettificato | 1,44 | 30,00 | 36 | 51,84 | 1080,00 |
| 60x120 Tropical Comp A+B | 1,44 | 30,40 | - | - | - |
| 60x60 Rettificato | 1,08 | 22,50 | 40 | 43,20 | 900,00 |
| 30x60 Rettificato | 1,08 | 22,50 | 48 | 51,84 | 1080,00 |
| 7,5x30 Rettificato | 1,00 | 22,10 | 48 | 48,00 | 1060,80 |
| Contributo spese imballo | euro 9,00/pal. netto // * | Per il 120x120 | contributo spese imballo | euro 15,00/pal. netto | |

REKTIFIZIERTE WEISSKÖRPERBESCHICHTUNG

40x120 cm \pm 7 mm



40x120 Limestone White Rektifiziert

5



40x120 Limestone White Wave Rektifiziert

4



40x120 Limestone Silver Rektifiziert

5



40x120 Limestone Sand Rektifiziert

5



40x120 Limestone Muretto Silver Rektifiziert

3 Muster

4



40x120 Limestone Muretto Sand Rektifiziert

3 Muster

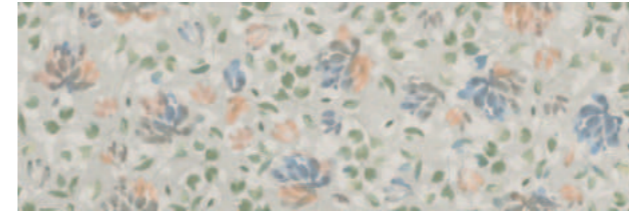
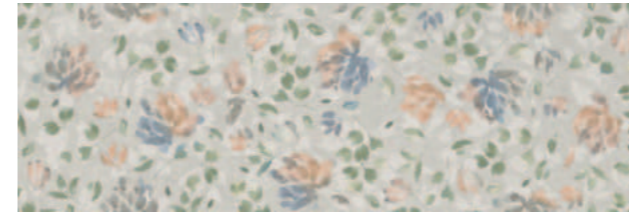
4



40x120 Limestone Spring White Rektifiziert

3 Muster

5



40x120 Limestone Moon Rektifiziert

3 Muster

5



| LIMESTONE | mq/box | kg/box | colli/pallet | mq/pallet | kg/pallet |
|--------------------------------------|--------|--------|--------------|-----------|-----------|
| 40x120 Rivestimento Rektifiziert | 2,40 | 30,46 | 20 | 48,00 | 609,20 |
| 40x120 Moon / Spring Rektifiziert | 2,40 | 30,46 | 20 | 48,00 | 609,20 |
| 40x120 Muretto / Wave / Rektifiziert | 1,92 | 24,36 | 20 | 38,40 | 487,20 |